



STRONG FOUNDATIONS, BEAUTIFUL FINISHES

Nationwide Construction Services



WELCOME TO Nationwide Construction Services

With over 30 years of experience across New York, New Jersey, and Connecticut, Nationwide Maintenance stands as your trusted partner for both general contracting and facility construction. From foundations to roofs, renovations to repairs, our licensed, in-house team delivers seamless, high-quality work—handling everything from project management to final finishes.

Our Construction Services

- **Construction Cleanups & Punch List Completion**

Thorough post-renovation cleaning ensures your property is spotless, functional, and move-in ready.

- **Siding Replacement & Installation**

Durable siding that boosts curb appeal, improves insulation, and never needs painting.

- **VCT & Ceramic Tile Services**

Resilient, low-maintenance VCT flooring and versatile ceramic wall/floor tiles—ideal for busy, high-traffic spaces.

- **Painting (Interior & Exterior)**

Organized, precise, and tailored painting for commercial properties and multifamily buildings.

- **Fencing (Installation & Repair)**

From stockade to PVC and chain-link, expertly installed or restored for security and style.

- **Concrete & Driveway Work**

Custom poured or repaired driveways, sidewalks, walks, steps, and curbing—built to last.



Construction Cleanups & Punch List Completion

After construction or renovations, our cleaning team ensures every surface—from ceilings and vents to desk interiors and glass—is dust-free, sanitized, and show-ready. Services include dumpster removal, debris clearing, full surface cleaning, flood cleanup, sanitization of kitchens/baths, floor buffing, and window finishing.



Why It Matters:

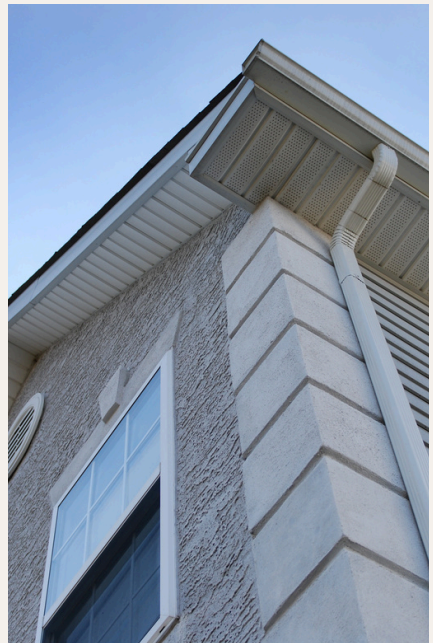
- Guarantees flawless presentation
- Promotes healthier indoor air quality
- Eases move-in and boosts first impressions

Siding Replacement & Installation

Our siding solutions are energy-efficient, low-maintenance, and impact-resistant. Benefits include never needing painting, four times better insulation, significant noise reduction, dust resistance, and enhanced curb appeal.

Why It's Valuable:

- Enhances energy savings
- Reduces exterior upkeep
- Elevates property aesthetics & durability



VCT & Ceramic Tile Installation

We install resilient, cost-effective Vinyl Composition Tiles (VCT) that withstand heavy foot traffic and multi-refinishing. Ceramic tiles—available glazed or unglazed—offer versatile aesthetics and are fireproof, fade-resistant, and adaptable for walls or floors.

Why It Matters:

- Easy to maintain and cost-efficient
- Durable in high-traffic spaces like schools and offices
- Stylish and long-lasting design options



Painting (Interior & Exterior)



Painting isn't just about a fresh coat—it's about transformation. Whether interior or exterior, color can redefine the personality of your building, uplift moods, and strengthen your brand's identity. At Nationwide Maintenance, our expert painters handle everything from small touch-ups to complete building overhauls, always with careful planning and precision execution.



For interiors, we understand how color influences productivity, comfort, and professionalism. That's why we prep every wall, repair imperfections, and apply long-lasting finishes with minimal disruption to your workflow.

On the exterior, your building's façade is the first impression clients and visitors get. Our team uses weather-resistant paints designed to endure New York, New Jersey, and Connecticut's toughest climates—ensuring that your property stays vibrant and protected year-round.



We work with multifamily buildings, commercial offices, schools, and industrial facilities, tailoring our approach to meet the unique requirements of each space.

Why It Matters:

- Enhances branding and aesthetics
- Maintains structural integrity
- Freshly painted walls create a great first impression
- Increases property value and improves tenant or client satisfaction.
- Prevents damage from moisture, mold, and everyday wear.

Fencing Installation & Repair



Whether installing or repairing, our team handles stockade, PVC, and chain-link fencing with precision and durability. Even after storms or wear, we restore security and appearance with expert craftsmanship.

Why It Matters:

- Strengthens perimeter protection
- Enhances aesthetic appeal
- Restores peace-of-mind after damage

Concrete Repair & Paving Services

Our services include leveling, pumping, stamped and colored finishes, retaining walls, overlays, patios, curbing, and more.



Why It Matters:

- Fast, minimally disruptive repairs
- Safe, attractive, long-lasting surfaces
- Custom concrete structures for any property need

Ready to Build, Restore, or Upgrade?

Whether you're modernizing a facility, repairing damage, or launching a bold new build—Nationwide Maintenance simplifies the construction process, offering end-to-end precision, reliability, and craftsmanship. Let's bring your environment to its fullest potential.

Contact Details:

📞 +1 (914) 241-1010

🌐 nationwidemaintenance.com

✉ marcie@nwmgc.com

